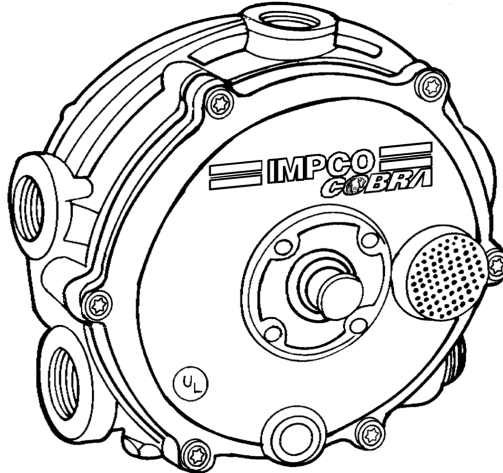


**COBRA SERIES TWO-STAGE CONVERTERS**



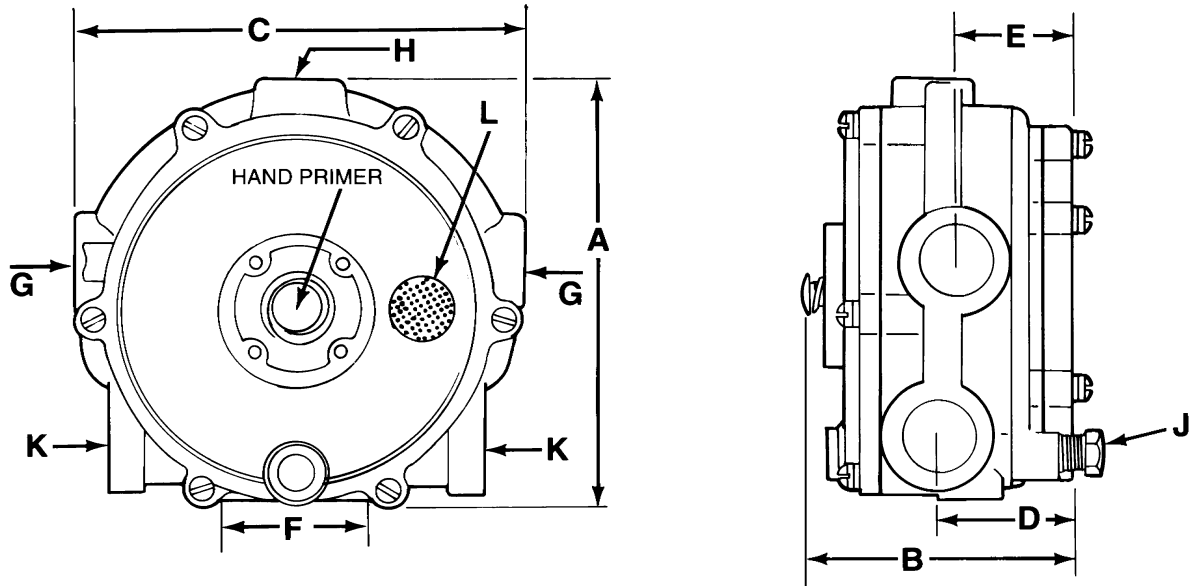
**TECHNICAL DESCRIPTION**

The IMPCO COBRA® Series converters deliver superior performance and excellent pressure output consistency throughout service life. Three vapor outlet pressures are available. Use of the standard blue secondary spring provides negative 0.37 kPa (-1.5 inches w.c.). The optional orange secondary spring, provides negative 0.12 kPa (-0.5 inch w.c.) and the red secondary spring, negative 0.05 kPa (-0.2 inch w.c.) output.

**TECHNICAL SPECIFICATIONS**

Fuel Type .....	Liquid / Vapor Propane
Maximum Inlet Pressure .....	2,151 kPa (312 psi)
Minimum Inlet Pressure .....	207 kPa (30 psi)
Primary Pressure .....	6.9 to 13.8 kPa (1.0 to 2.0 psi)
Nominal Outlet Pressure	
.....	Standard (blue spring) -0.37 kPa (-1.5 w.c.)
.....	Cobra I (orange spring) -0.12 kPa (-0.5 w.c.)
.....	Cobra II (red spring) -0.05 kPa (-0.2 w.c.)
Horsepower Rating .....	3.7 to 75 kW (5 to 100 hp)
Temperature Range .....	-40° C to +121° C (-40° to +250° F)
Filtration Requirement .....	40 micron
Heating Chamber Source .....	Engine Coolant, Engine Oil, Exhaust Heat can be used w/B3-20 baffle.
Mounting Position .....	Vertical (outlet down) recommended.
Horizontal (secondary cover up) position can be used when fuel contamination can be controlled with HD-5 specified propane fuel.	
Weight .....	0.86 kg (1.9 lbs)
Applications .....	Open Loop, Closed Loop, Forced Induction up to 34.4 kPa (5 psi)

DIMENSIONS



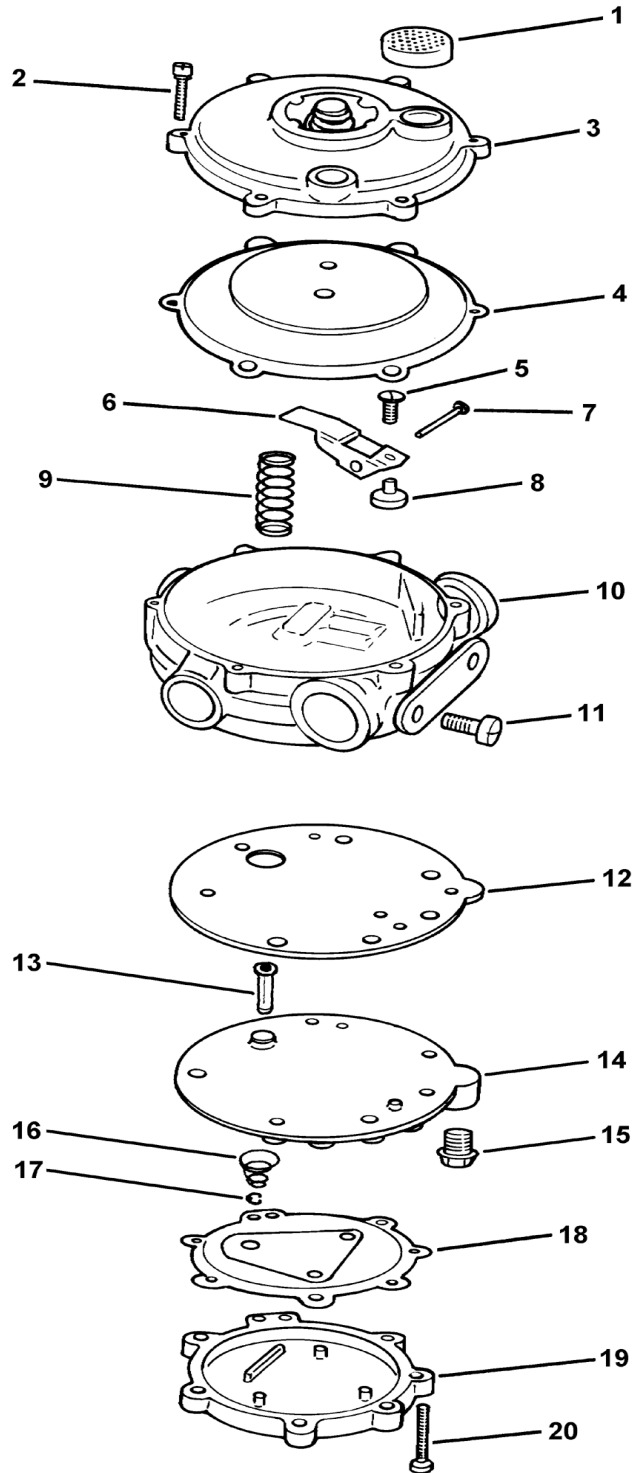
PART #	A	B	C	D	E	F	G	H	J	K	L
	OVERALL HEIGHT	OVERALL DEPTH	OVERALL WIDTH	BACK OF CONVERTER TO CTR. OF VAPOR FUEL OUTLET	BACK OF CONVERTER TO CTR. OF WATER OUTLET	MOUNTING HOLES CTR. TO CTR.	COOLANT INLET AND OUTLET (NPT)	LIQUID FUEL INLET (NPT)	PRIMARY TEST PORT (NPT)	VAPOR FUEL OUTLET (NPT)	VENT BALANCE LINE CONN. (NPT)
COBRA	108 mm (4.250")	70.3 mm (2.781")	117 mm (4.625")	41.3 mm (1.625")	34.9 mm (1.375")	41.3 mm (1.625")	3/8"	1/4"	1/8"	1/2"	1/8"

MODEL COBRA PRESSURE REGULATORS

ITEM #	PART #	DESCRIPTION
1	S7-4	Screen, atmospheric vent
2	S1-15265-003	Screw, 8-32 x 7/8" Torx style (6)
3	NSS	Cover ass'y, secondary
4	NSS	Diaphragm ass'y, secondary, fluorosilicone
5	NSS	Screw, 8-32 x 1/2" Torx style
6	L1-37	Lever, secondary
7	P1-8	Pin, secondary fulcrum
8	S4-27*	Seat, secondary
9	S2-35	Spring, blue secondary, -0.37 kPa (-1.5" H2O), standard
	S2-38	Spring, orange secondary, -0.12 kPa (-0.5" H2O), optional
	S2-136	Spring, red secondary -0.05kPa (-0.2"H2O)
10	NSS	Body ass'y, w/ jet
Not Shown	NSS	Plug, vapor outlet
11	S1-5	Screw, 1/4-20 x 5/8" (2)
12	G1-150	Gasket, body to body cover plate
13	NSS	Pin, valve primary
14	NSS	Plate, body cover
15	P3-13	Plug, 1/8 NPT, hex head
16	NSS	Spring, primary
17	NSS	E-ring, external
18	NSS	Diaphragm ass'y, primary
19	NSS	Cover, primary
20	NSS	Screw, 8-32 x 1-1/8" Torx style (7)

**NSS = Not Serviced Separately**

\* Included in Repair Kit



**STANDARD AND OPTIONAL EQUIPMENT**

**STANDARD CONVERTERS**

MODEL	SECONDARY DIAPHRAGM	OUTLET PRESSURE
COBRA	AD1-27-5 (Fluorosilicone)	Neg. 370 Pa (Neg. 1.5 "H2O)
COBRA-1	AD1-27-5 (Fluorosilicone)	Neg. 120 Pa (Neg. 0.5 "H2O)
CB-30177	Converter Ass'y, Cobra	
CB-30580-001	Converter Ass'y, Cobra	
CB-30580-002	Converter Ass'y, Cobra	
CB-30580-004	Converter Ass'y, Cobra	
CB-30712-001	Cobra Ass'y, Primerless	Neg. 370 Pa (Neg. 1.5 "H2O)
CB-30712-002	Cobra Ass'y Primerless	Neg. 370 Pa (Neg. 1.5 "H2O)
CB-441	Cobra, w/Left Hand Plug	
CB-R-772	Cobra w/ Right Hand Plug	
CS4-30772-004	Cobra, L4, Sub-ass'y	
P-COBRA	Positive Pressure Cobra	

**REPAIR KITS**

PART #	DESCRIPTION
RK-COBRA	Standard repair kit

**ACCESSORIES**

PART #	DESCRIPTION
AB1-28	Mechanical primer, COBRA Series converters
SV	Start assist valve
VPV	Vacuum power valve
AF4-14883	Check Valve