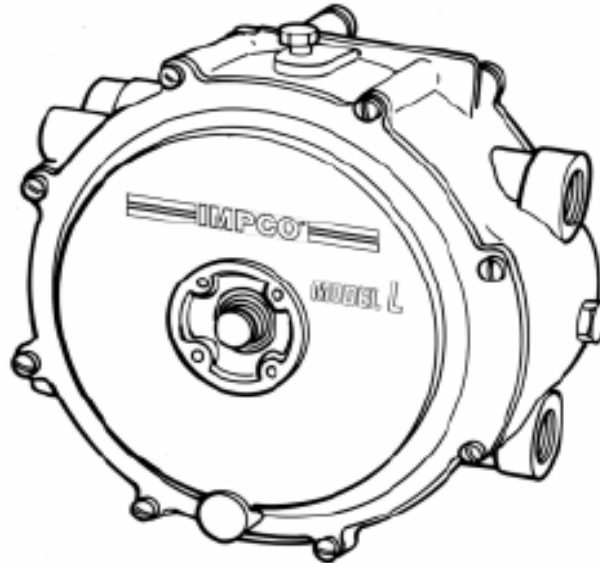


MODEL L SERIES TWO-STAGE CONVERTER



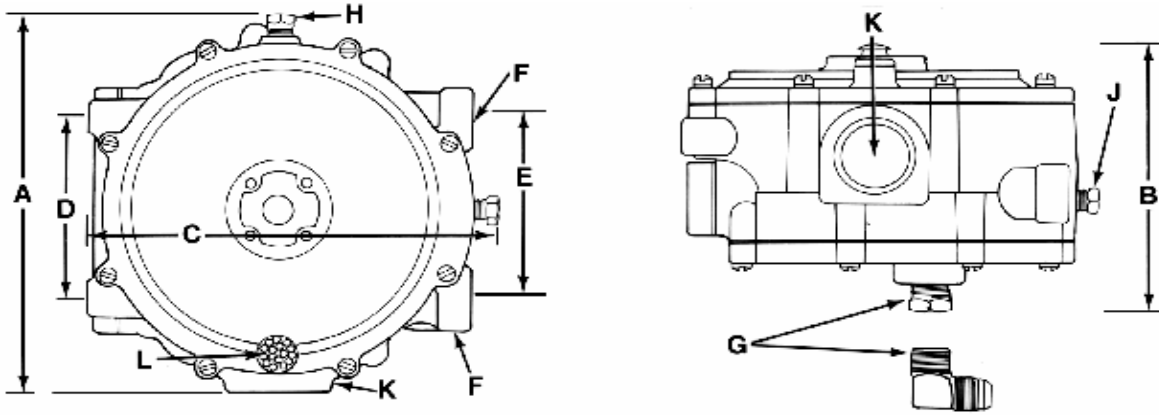
TECHNICAL DESCRIPTION

The IMPCO Model L Series is a two stage regulator / converter. These units are coolant heated and are able to provide liquid vaporization to supply up to 150 kW (200 hp) in industrial engine applications. The L Series regulator provides a negative outlet pressure of -0.37 kPa (-1.5 w.c.). No optional pressures are available. The Model L offers economical performance with full features; rear fuel inlet, and primary and secondary diagnostic test ports. Optional silicone diaphragm materials are also available. Regulatory approvals include UL, ULC, E4 Regulation Number 67.

TECHNICAL SPECIFICATIONS

Fuel Type	Liquid / Vapor Propane
Max. Inlet Pressure	2,151 kPa (312 psi)
Min. Inlet Pressure	207 kPa (30 psi)
Primary Pressure	6.9 to 13.8 kPa (1.0 to 2.0 psi)
Nominal Outlet Pressure	0.37 kPa (-1.5 w.c.)
Horsepower Rating	37.3 to 242 kW (50 to 325 hp)
Temperature Range	-40°C to +121° C (-40° to 250° F)
Filtration Requirement	40 micron
Heating Chamber Source	Engine Coolant
Mounting Position	Vertical recommended. Horizontal position can be used when fuel contamination can be controlled with HD-5 specified propane fuel.
Weight	1.63 kg (3.6 lbs.)
Applications	Open Loop, Closed Loop, Forced Induction up to 34.4 kPa (5 psi)

DIMENSIONS



	A	B	C	D	E	F	G	H	J
	OVERALL HEIGHT	OVERALL DEPTH	OVERALL WIDTH	MOUNTING HOLES CTR. TO CTR.	COOLANT INLET AND OUTLET CTR. TO CTR.	COOLANT INLET AND OUTLET (NPT)	LIQUID FUEL INLET (NPT)	SECONDARY ACCESSORY PORT (NPT)	PRIMARY TEST PORT (NPT)
LB, LB-2	160 mm (6.313")	110 mm (4.313")	165 mm (6.500")	76.2 mm (3.000")	76.2 mm (3.000")	3/8"	1/4" *	1/8"	1/8"

* Optional elbow fuel inlet is 3/8" SAE flare x 1/4 NPT, 90°

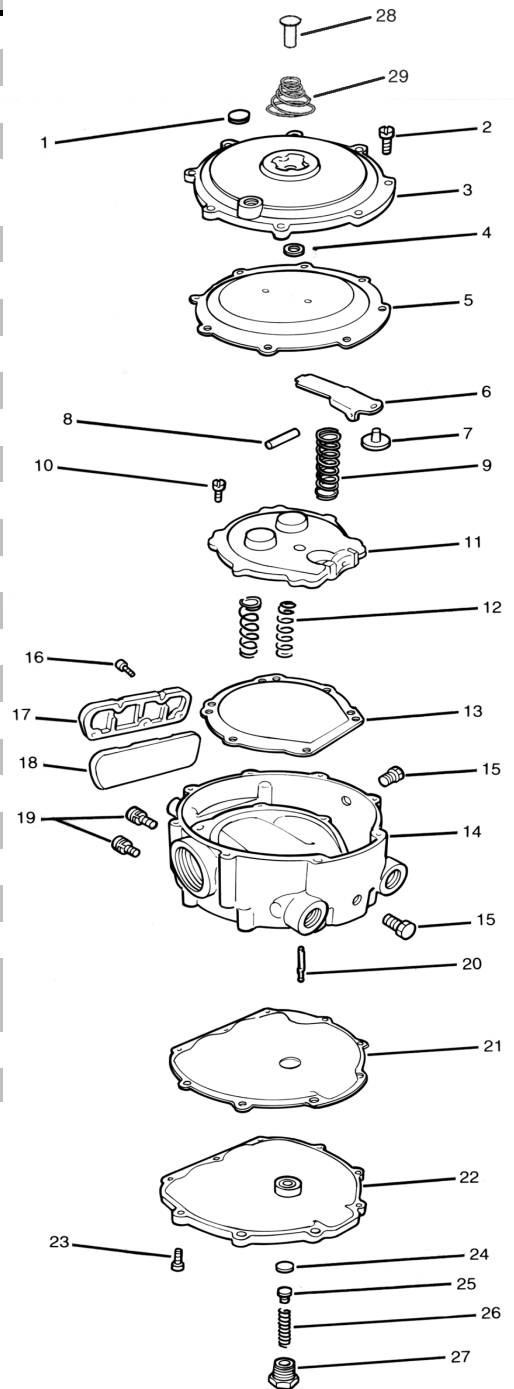
	K	L
	VAPOR FUEL OUTLET (NPT)	VENT BALANCE LINE CONNECTION (NPT)
LB, LB-2	1"	1/8"

MODEL L SERIES

ITEM #	PART #	DESCRIPTION
1	S7-1	Screen, atmospheric vent
2	S1-59 *	Screw, 8-32 x 5/8" SEMS (8)
3	NSS	Cover ass'y, secondary
4	NSS	Washer, hand primer
5	NSS	Diaphragm ass'y, secondary, Hydrin
	AD1-31 *	Diaphragm ass'y, secondary, Silicone
6	AL1-87	Lever, secondary
7	S4-37 *	Seat, secondary
8	NSS	Pin, secondary lever fulcrum
9	NSS	Spring, secondary regulator (blue)
10	S1-59	Screw, 8-32 x 3/8" SEMS (2)
11	NSS	Cover, primary diaphragm
12	S2-92	Spring, primary regulator
13	AD1-32	Diaphragm ass'y, primary
14	NSS	Body ass'y
15	NSS	Plug, hex head, 1/8 NPT
16	S1-59 *	Screw, 8-32 x 5/8" SEMS (5)
17	C1-61	Cover, water passage
18	G1-118 *	Gasket, water passage
19	NSS	Screw, 1/4-20 x 5/8" SEMS (2)
20	P1-34	Pin, primary valve
21	G1-119	Gasket, vaporizing chamber
22	AC1-64	Cover, vaporizing chamber
23	S1-3 *	Screw, 10-24 x 5/8" SEMS (9)
24	S4-18 *	Seat, primary
25	S4-23 *	Seat support, primary
26	S2-92	Spring primary valve
	S2-93	Spring primary valve
27	B3-25551	Bushing, fuel inlet
Not Shown	P1-10	Pin, primer
Not Shown	S2-21	Spring, primer

NSS = Not Serviced Separately

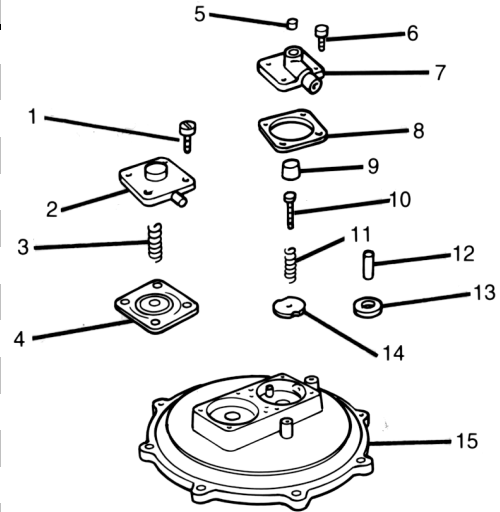
* Item included in repair kit



COMPONENT PARTS (Continued)

AC1-66 COVER (L-20 SERIES WITH EC1)

ITEM #	PART #	DESCRIPTION
1	NSS	Screw, 8-32 x 5/8" SEMS (4)
2	NSS	Cover, diaphragm
3	NSS	Spring, diaphragm
4	NSS	Diaphragm ass'y, for EC1
5	NSS	Plug, 1/16 NPT
6	S1-59	Screw, 8-32 x 5/8" SEMS (4)
7	NSS	Cover, EC1-3
8	NSS	Gasket, EC1 body
9	NSS	Spring, valve
10	NSS	Screw adjustment, 6-32 x 7/8"
11	NSS	Screw, adjustment lock
12	NSS	Screw, Allen set, 10-32 x 3/4"
13	NSS	Nut, 10-32
14	NSS	Valve, disk
15	NSS	Cover ass'y, secondary, w/ EC1



FUEL CONTROL VALVES

PART #	DESCRIPTION
SV *	Start assist valve, electric solenoid
VPV *	Vacuum power valve
FCV	Fuel control valve, computer feedback system

* Use in secondary accessory port.

REPAIR KITS

PART #	DESCRIPTION
RK-L	For model L
RK-L-2	For model L, w/ silicone diaphragm

NSS = Not Serviced Separately

GAUGE

PART #	DESCRIPTION
G2-2	For Models E & L secondary lever