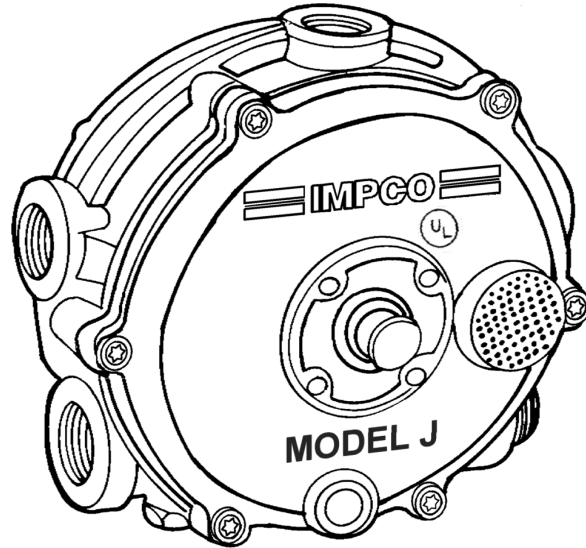


MODEL J SERIES TWO-STAGE CONVERTER



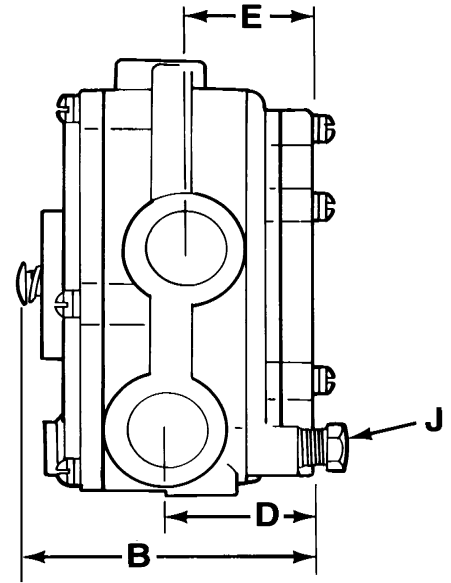
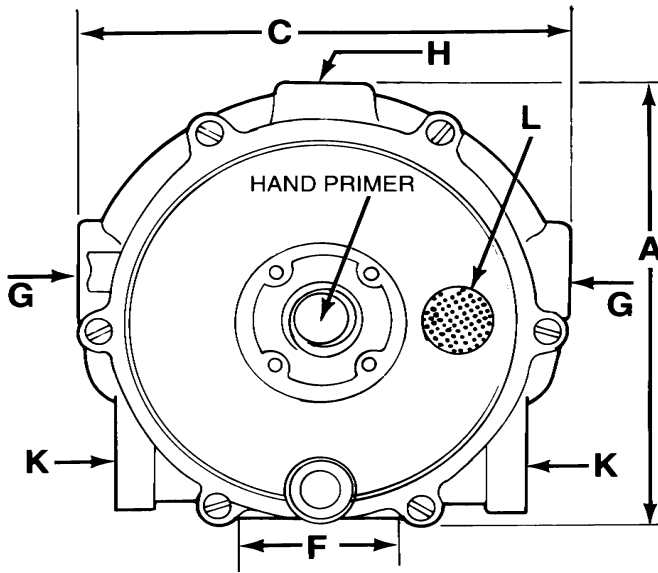
TECHNICAL DESCRIPTION

The IMPCO Model J Series converters deliver superior performance and excellent pressure output consistency throughout service life. Three vapor outlet pressures are available. Use of the standard blue secondary spring provides negative 0.37 kPa (-1.5 inches w.c.). The optional orange secondary spring provides negative 0.12 kPa (-0.5 inch w.c.) and the red secondary spring negative 0.05 kPa (-0.2 inch w.c.) output.

TECHNICAL SPECIFICATIONS

Fuel Type	Liquid / Vapor Propane
Max. Inlet Pressure	2,151 kPa (312 psi)
Min. Inlet Pressure	207 kPa (30 psi)
Primary Pressure	6.9 to 13.8 kPa (1.0 to 2.0 psi)
Nominal Outlet Pressure	Standard (blue spring) -0.37 kPa (-1.5 w.c.)
.....	Optional (orange spring) -0.12 kPa (-0.5 w.c.)
.....	Optional (red spring) -0.05 kPa (-0.2 w.c.)
Horsepower Rating	3.7 to 75 kW (5 to 100 hp)
Temperature Range	-40° C to +121° C (-40° to +250° F)
Heating Chamber Source	Engine Coolant, Engine Oil, Exhaust Heat can be used w/ B3-20 baffle.
Mounting Position	Vertical (outlet down) recommended. Horizontal (secondary cover up) position can be used when fuel contamination can be controlled with HD-5 specified propane fuel.
Weight	0.86 kg (1.9 lbs.)
Applications	Open Loop, Closed Loop, Forced Induction up to 34.4 kPa (5 psi)

DIMENSIONS



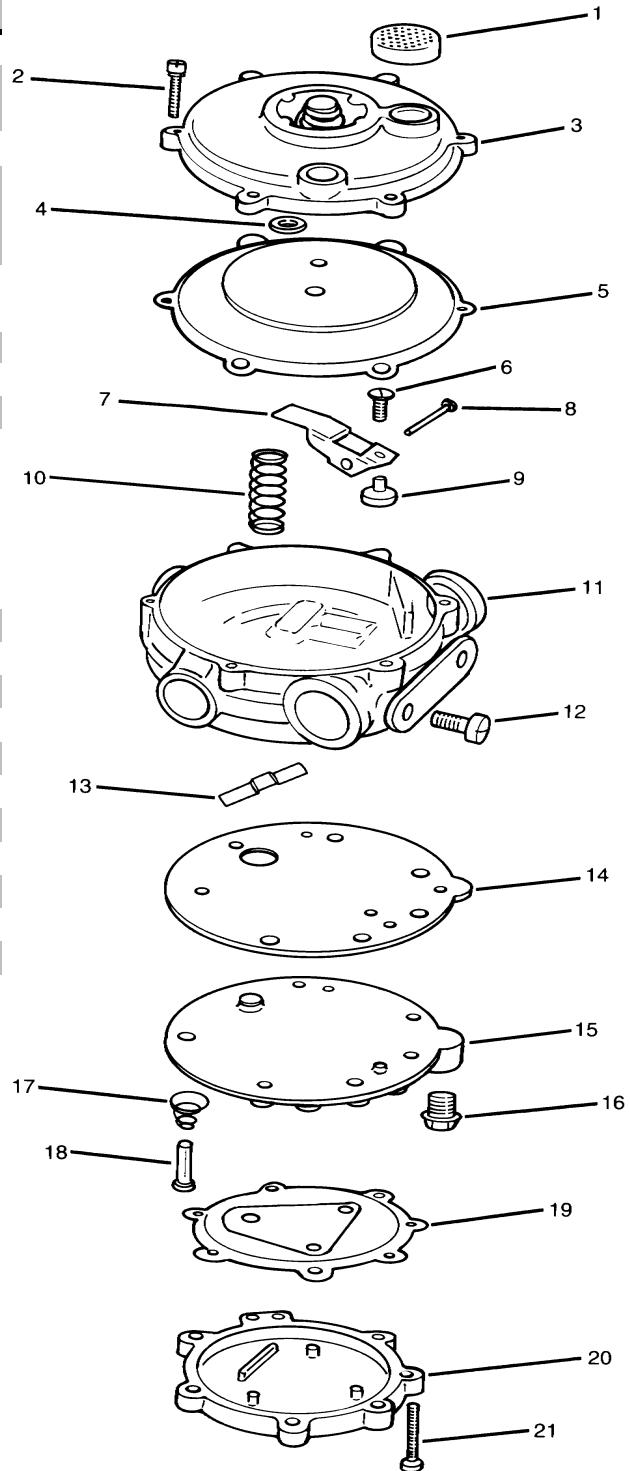
A	B	C	D	E	F	G	H	J	K	L
OVERALL HEIGHT	OVERALL DEPTH	OVERALL WIDTH	BACK OF CONVERTER TO CTR. OF VAPOR FUEL OUTLET	BACK OF CONVERTER TO CTR. OF WATER OUTLET	MOUNTING HOLES CTR. TO CTR.	COOLANT INLET AND OUTLET (NPT)	LIQUID FUEL INLET (NPT)	PRIMARY TEST PORT (NPT)	VAPOR FUEL OUTLET (NPT)	VENT BALANCE LINE CONNECTION (NPT)
108 mm (4.25")	73.0 mm (2.88")	118 mm (4.63")	41.3 mm (1.63")	34.9 mm (1.38")	41.3 mm (1.63")	3/8"	1/4"	1/8"	1/2"	1/8"

MODEL J SERIES

ITEM #	PART #	DESCRIPTION
1	S7-4	Screen, atmospheric vent
2	S1-15265-003	Screw, 8-32 x 7/8" Torx style (6)
	S1-59	Screw, 8-32 x 5/8" Slot style (6)
3	NSS	Cover ass'y, secondary
4	AD1-26	Diaphragm ass'y, secondary, Hydrin
	AD1-27 *	Diaphragm ass'y, secondary, silicone
	AD1-27-4	Diaphragm ass'y, secondary,
5	NSS	Screw, 8-32 x 1/2" Torx style
	S1-42	Screw, 8-32 x 3/8" Slot style
6	L1-37	Lever, secondary
7	P1-8	Pin, secondary fulcrum
8	S4-27 *	Seat, secondary
9	S2-35	Spring, blue secondary, Neg. 0.37 kPa (Neg. 1.5" H2O), standard
	S2-38	Spring, orange, secondary, Neg. 0.12 kPa (Neg. 0.5" H2O), optional
	S2-136	Spring, red, secondary, Neg. 0.05 kPa (Neg. 0.2" H2O), optional
10	NSS	Body ass'y, w/ jet
11	NSS	Plug, vapor outlet
12	NSS	Screw, 1/4-20 x 5/8" (2)
13	S4-16 *	Valve, primary (S4-16P, RM-8)
14	G1-85	Gasket, body to body cover plate
15	NSS	Plate, body cover
16	P3-13	Plug, 1/8 NPT, hex head
17	S2-36	Spring, primary
18	NSS	Primary valve pin
19	NSS	Diaphragm ass'y, primary
20	NSS	Cover, primary
21	S1-15265-003	Screw, 8-32 x 7/8" Torx style (7)
	S1-15265-005	Screw, 8-32 x 1-1/8" Torx style (7)

NSS = Not Serviced Separately

* Included in repair kit



STANDARD AND OPTIONAL EQUIPMENT

STANDARD CONVERTERS

MODEL	SECONDARY DIAPHRAGM	OUTLET PRESSURE	CHECK VALVE	NOTE
JB	AD1-26 (Black Hydrin)	Neg. 0.37 kPa (Neg. 1.5" H2O)	NO	
JB-2	AD1-27 (Silicone)	Neg. 0.37 kPa (Neg. 1.5" H2O)	NO	
JB-2ULC	AD1-27 (Silicone)	Neg. 0.37 kPa (Neg. 1.5" H2O)	NO	CANADA
JB-C-140	AD1-26 (Black Hydrin)	Neg. 0.37 kPa (Neg. 1.5" H2O)	AF4-14883	2360140
JB-C-2	AD1-27 (Silicone)	Neg. 0.37 kPa (Neg. 1.5" H2O)	AF4-14883	
JC-C-725	AD1-26 (Black Hydrin)	Neg. 0.37 kPa (Neg. 1.5" H2O)	AF4-14883	
JB-L-377	AD1-26 (Black Hydrin)	Neg. 0.37 kPa (Neg. 1.5" H2O)		Plug, L.H. CLARK
JB-R	AD1-26 (Black Hydrin)	Neg. 0.12 kPa (Neg. 0.5" H2O)		Blue Spring, R.H. PLUG
JO	AD1-26 (Black Hydrin)	Neg. 0.12 kPa (Neg. 0.5" H2O)	NO	
JO-2	AD1-27 (Silicone)	Neg. 0.12 kPa (Neg. 0.5" H2O)	NO	

FUEL CONTROL VALVES

PART #	DESCRIPTION
SV	Start assist valve
VPV	Vacuum power valve

PRIMER

PART #	DESCRIPTION
AB1-28	Mechanical primer, J-Series converters
SV	Start assist valve

REPAIR KITS

PART #	DESCRIPTION
RK-J	Standard repair kit
RK-J-2	Repair kit, w/ silicone diaphragm
RK-J-3	Repair kit Mod J w/ Fluorosilicone Diaphragm
RK-J-632	Std. RK-J for Clark
RK-J-C	Repair kit, w/ check valve
RK-JC-734	Repair Kit for JO-C/Clark

BAFFLE

PART #	DESCRIPTION
B3-20	Baffle Exhaust Heated conversions