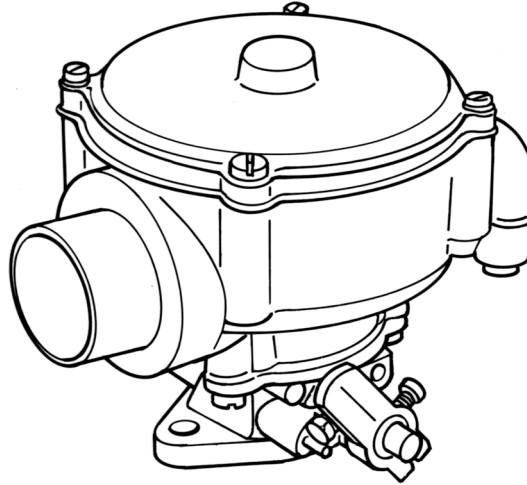


**MODEL 100 SERIES STANDARD CARBURETOR
FOR NATURAL GAS, LP-GAS & DIGESTER GAS**



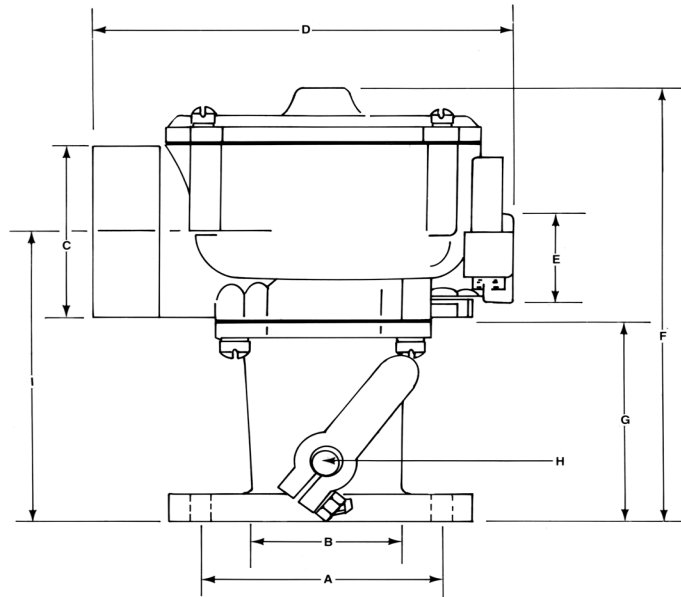
TECHNICAL DESCRIPTION

The Model 100 Series is a single diaphragm air-gas valve carburetor/mixer. It offers a 90-degree air inlet to provide low overhead clearance, and is available with several Air Horn and throttle body options. This unit is available for LPG, Natural Gas and Digester Gas applications. It has been successfully used for other hydrocarbon-based vapor fuels as low as 500 BTU. The Model 100 is also available for Feedback applications with the 'FB' designation.

The 100 mixer provides a convenient 1/8 NPT balance port and two separate air valve vacuum ports. Additional low speed, idle mixture control can be obtained to lean air-fuel mixtures through the use of optional shims.

TECHNICAL SPECIFICATIONS

Fuel.....	Type Natural Gas, LP-Gas, Digester Gas
Air Flow Capacity.....	93 L/s (197 cfm) @ 2.0 in Hg manifold depression
Horsepower Rating.....	91.7 kW (123 hp) @ 2.0 in Hg manifold depression
Port Size.....	1/2 NPT
Materials	
Body.....	Aluminum
Diaphragm.....	Hydrin or Silicone
Diaphragm.....	Cover Aluminum

DIMENSIONS


STD. CARB	MIXER	THRTL. BODY	SAE FLANGE	CTR. TO CTR. BOLT SPACING	BORE	MIXER AIR HORN DIA.	OVRAL. WIDTH	NPT INLET	OVRAL. HEIGHT	THRTL. BODY HEIGHT	THRTL. SHAFT DIA.	FLANGE TO CTR. OF AIR HORN
CA100-6	CA100M-2	AT2-2	1"	60.3 mm (2.375")	30.2 mm (1.188")	47.6 mm (1.875")	131 mm (5.156")	1/2"	117 mm (4.625")	36.5 mm (1.438")	6.4 mm (0.250")	67.0 mm (2.64")
CA100-8	CA100M-3	BT2-3	1-1/4"	68.3 mm (2.688")	36.5 mm (1.438")	52.4 mm (2.063")	131 mm (5.156")	1/2"	150.4 mm (5.92")	69.1 mm (2.719")	8.0 mm (0.313")	99.6 mm (3.92")
CA100-10	CA100M-4	BT2-3	1-1/4"	68.3 mm (2.688")	36.5 mm (1.438")	58.8 mm (2.313")	131 mm (5.156")	1/2"	150.4 mm (5.92")	69.1 mm (2.719")	8.0 mm (0.313")	99.6 mm (3.92")
CA100-12	CA100M-4	BT2-4-1	1-1/2"	74.6 mm (2.938")	42.9 mm (1.688")	58.8 mm (2.313")	131 mm (5.156")	1/2"	150.4 mm (5.92")	69.1 mm (2.719")	8.0 mm (0.313")	99.6 mm (3.92")
CA100-35	CA100M-4-2	BT2-4-1	1-1/2"	74.6 mm (2.938")	42.9 mm (1.688")	58.8 mm (2.313")	131 mm (5.156")	1/2"	150.4 mm (5.92")	69.1 mm (2.719")	8.0 mm (0.313")	99.6 mm (3.92")
CA100-46	CA100M-2	BT2-4-3	1-3/4"	84.1 mm (3.313")	42.9 mm (1.688")	47.6 mm (1.875")	131 mm (5.156")	1/2"	152 mm (6.000")	71.4 mm (2.813")	8.0 mm (0.313")	102 mm (4.01")
CA100-56	CA100M-3	AT2-23	1-1/4"	68.3 mm (2.688")	36.5 mm (1.438")	52.4 mm (2.063")	131 mm (5.156")	1/2"	116.3 mm (4.58")	34.9 mm (1.375")	8.0 mm (0.313")	65.5mm (2.58")
CA100-60	CA100M-5	BT2-2	1"	60.3 mm (2.375")	30.2 mm (1.188")	41.3 mm (1.625")	131 mm (5.156")	1/2"	117 mm (4.625")	36.5 mm (1.438")	6.4 mm (0.250")	67.0 mm (2.64")
CA100-62	CA100M-2	AT2-2	1"	60.3 mm (2.375")	30.2 mm (1.188")	47.6 mm (1.875")	131 mm (5.156")	1/2"	117 mm (4.625")	36.5 mm (1.438")	6.4 mm (0.250")	67.0 mm (2.64")
CA100-64	CA100M-3P	BT2-23	1-1/4"	68.3 mm (2.688")	36.5 mm (1.438")	52.4 mm (2.063")	131 mm (5.156")	1/2"	116.3 mm (4.58")	34.9 mm (1.375")	8.0 mm (0.313")	65.5mm (2.58")
CA100-64G	CA100M-3					52.4 mm (2.063")	131 mm (5.156")					
CA100-66	CA100M-4	AT2-4-1	1-1/2"	74.6 mm (2.938")	42.9 mm (1.688")	58.8 mm (2.313")	131 mm (5.156")	1/2"	150.4 mm (5.92")	69.1 mm (2.719")	8.0 mm (0.313")	99.6 mm (3.92")
CA100-010	CA100M-4	BT2-3	1-1/4"	68.3 mm (2.688")	36.5 mm (1.438")	58.8 mm (2.313")	131 mm (5.156")	1/2"	150.4 mm (5.92")	69.1 mm (2.719")	8.0 mm (0.313")	99.6 mm (3.92")



SECTION 1: CARBURETORS & MIXERS
CA100 SERIES

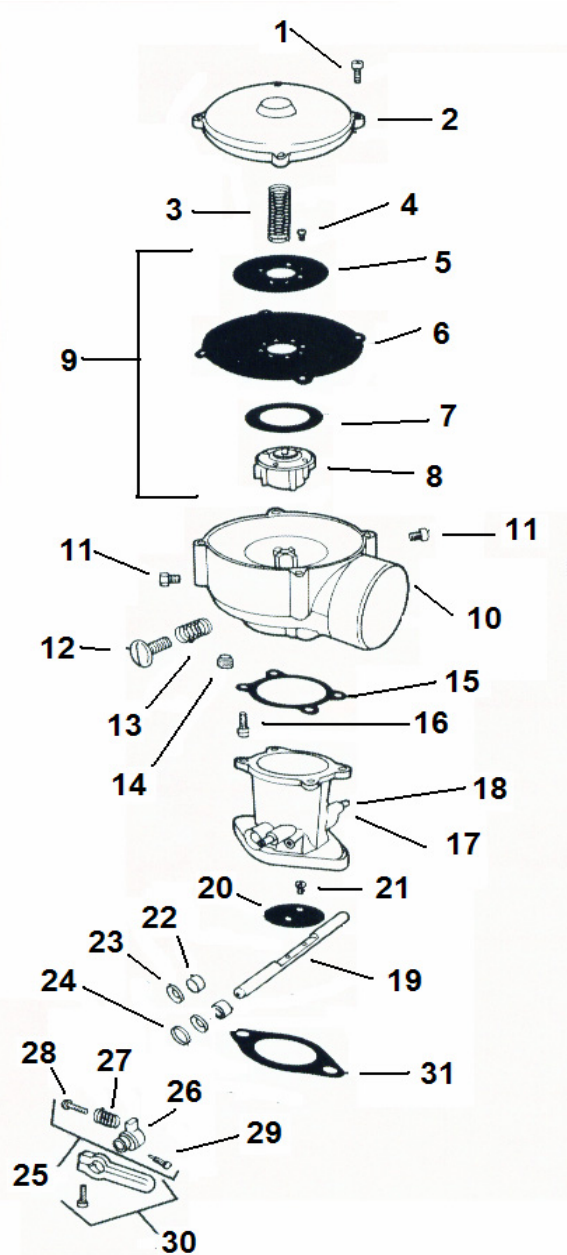
DIMENSIONS (CONTINUED)

				A	B	C	D	E	F	G	H	I
STD. CARB	MIXER	THRITTLE. BODY	SAE FLANGE	CTR.TO CTR. BOLT SPACING	BORE	MIXER AIR HORN DIA.	OVERALL WIDTH	NPT INLET	OVERALL HEIGHT	THRITTLE. BODY HEIGHT	THRITTLE. SHAFT DIA.	FLANGE TO CTR. OF AIR HORN
CA100-78	CA100M-4	AT2-23	1.25"	68.3 mm (2.688")	36.5 mm (1.438")	58.8 mm (2.313")	131 mm (5.156")	1/2"	116.3 mm (4.58")	34.9 mm (1.375")	8.0 mm (0.313")	65.53 mm (2.58")
CA100-90	CA100M-4	BT2-16-4	1.25-1.5"	71.6 mm (2.82")	42.9 mm (1.688")	58.8 mm (2.313")	131 mm (5.156")	1/2"	122.7 mm (4.83")	41.3 mm (1.625")	8.0 mm (0.313")	71.9 mm (2.83")
CA100-104	CA100M-3	BT2-23-9	1.25"	68.3 mm (2.688")	36.5 mm (1.438")	52.4 mm (2.063")	131 mm (5.156")	1/2"	116.3 mm (4.58")	34.9 mm (1.375")	8.0 mm (0.313")	65.53 mm (2.58")
CA100-108	CA100M-3-3	AT2-23-6	1.25"	68.3 mm (2.688")	36.5 mm (1.438")	52.4 mm (2.063")	131 mm (5.156")	1/2"	116.3 mm (4.58")	34.9 mm (1.375")	8.0 mm (0.313")	67.06 mm (2.64")
CA100-110	CA100M-3	BT2-2-401	1"	60.3 mm (2.375")	30.2 mm (1.188")	52.4 mm (2.063")	131 mm (5.156")	1/2"	117 mm (4.625")	36.5 mm (1.438")	6.4 mm (0.250")	67.0 mm (2.64")
CA100-112	CA100M-3	BT2-23-12	1.25"	68.3 mm (2.688")	36.5 mm (1.438")	52.4 mm (2.063")	131 mm (5.156")	1/2"	116.3 mm (4.58")	34.9 mm (1.375")	8.0 mm (0.313")	65.53 mm (2.58")
CA100-124-2	CA100M-4	AT2-2-7	1"	60.3 mm (2.375")	30.2 mm (1.188")	58.8 mm (2.313")	131 mm (5.156")	1/2"	117 mm (4.625")	36.5 mm (1.438")	6.4 mm (0.250")	67.06 mm (2.64")
CA100-134	CA100M-3	BT2-2-134	1"	60.3 mm (2.375")	30.2 mm (1.188")	52.4 mm (2.063")	131 mm (5.156")	1/2"	117 mm (4.625")	36.5 mm (1.438")	6.4 mm (0.250")	67.06 mm (2.64")
CA100-136	CA100M-3	AT2-23-141	1.25"	68.3 mm (2.688")	36.5 mm (1.438")	52.4 mm (2.063")	131 mm (5.156")	1/2"	116.3 mm (4.58")	34.9 mm (1.375")	8.0 mm (0.313")	65.53 mm (2.58")
CA100-138	CA100M-3	BT2-2-138	1"	60.3 mm (2.375")	30.2 mm (1.188")	25.4 mm (2.063")	131 mm (5.156")	1/2"	117 mm (4.625")	36.5 mm (1.438")	6.4 mm (0.250")	67.06 mm (2.64")
CA100-139	CA100M-3	BT2-2-138	1"	60.3 mm (2.375")	30.2 mm (1.188")	25.4 mm (2.063")	131 mm (5.156")	1/2"	117 mm (4.625")	36.5 mm (1.438")	6.4 mm (0.250")	67.06 mm (2.64")
CA100-180	CA100M-3P	AT2-23-849	1.25"	68.3 mm (2.688")	36.5 mm (1.438")	52.4 mm (2.063")	131 mm (5.156")	1/2"	116.3 mm (4.58")	34.9 mm (1.375")	8.0 mm (0.313")	65.53 mm (2.58")
CA100-194	CA100M-3					25.4 mm (2.063")	131 mm (5.156")	1/2"				
CA100-222	CA100M-3					25.4 mm (2.063")	131 mm (5.156")	1/2"				
CA100-224	CA100M-3-22	BT2-3-9	1.25"	68.3 mm (2.688")	36.5 mm (1.438")	52.4 mm (2.063")	131 mm (5.156")	1/2"	150.4 mm (5.92")	69.1 mm (2.719")	8.0 mm (0.313")	71.9 mm (2.83")
CA100-245	CA100M-4	BT2-16-6	1.25-1.5"	71.6 mm (2.82")	42.9 mm (1.688")	58.8 mm (2.313")	131 mm (5.156")	1/2"	122.7 mm (4.83")	41.3 mm (1.625")	8.0 mm (0.313")	71.9 mm (2.83")
CA100-272	CA100M-3	AT2-23-6	1.25"	68.3 mm (2.688")	36.5 mm (1.438")	52.4 mm (2.063")	131 mm (5.156")	1/2"	116.3 mm (4.58")	34.9 mm (1.375")	8.0 mm (0.313")	65.53 mm (2.58")

MODEL CA100 STANDARD CARBURETOR

ITEM #	PART #	DESCRIPTION
1	S1-3	Screw, 10-24 x 5/8" SEMS (4)
2	C1-17	Cover
3	S2-85	Spring, air valve
4	S1-22	Screw, 5-32 x 1/4" SEMS (4)
5	P2-22	Plate, backup
6	D1-17	Diaphragm
	D1-17-2	Diaphragm, silicone
7	R1-19	Ring, air valve
8	BV1-14	Air gas valve ass'y, complete
9	AV1-14	Valve & diaphragm ass'y, complete
10	AB1-8-4	Body ass'y
11	S1-69	Screw, 1/4-28 x 5/16" (2)
12	S1-74	Screw, idle
13	S2-88	Spring, idle screw
14	P3-13	Plug, 1/8 NPT
15	G1-11	Gasket, throttle body to mixer
16	S1-19	Screw, 12-24 x 5/8" SEMS (4)
17	NSS	Throttle Body
18	NSS	Pin, throttle stop (2)
19	S5-1	Throttle shaft, 6.4 mm (0.25") dia.
20	F2-1	Fly, 19.1 mm (0.75")
	F2-2	Fly, 25.4 mm (1.00")
	F2-3	Fly, 31.8 mm (1.25")
	F2-4	Fly, 38.1 mm (1.50")
21	NSS	Screw, 6-32 x 1/4" SEMS (2)
22	B2-11	Bearing Oilite, 6.4 mm (0.25") I.D. (2)
	B2-12	Bearing Oilite, 8.0 mm (0.31") I.D. (2)
	B2-7	Bearing needle, 8.0 mm (0.31") I.D., Opt.
23	S3-8	Seal, 6.4 mm (0.25") shaft (2)
	S3-9	Seal, 8.0 mm (0.31") shaft (2)
	S3-25	Seal, internal, 8.0 mm (0.31") I.D., Opt.
24	R1-9	Ring, seal retainer (2)
25	AL1-8-1	Throttle Stop ass'y, 6.4 mm (0.25") I.D.
	AL1-8-2	Throttle Stop ass'y, 8.0 mm (0.31") I.D.
26	NSS	Throttle Stop lever, 6.4 mm (0.25") I.D.
27	S1-21	Stop screw, 10-32 x 3/4"
28	S2-15	Spring, idle stop screw
29	S1-18	Pin, screw, throttle stop
30	AL1-7-3	Throttle lever, short w/ screw
	AL1-7-1	Throttle lever, long w/ screw
31	G1-16	Gasket, 19.1 mm (0.75") flange
	G1-17	Gasket, 25.4 mm (1.00") flange
	G1-18	Gasket, 31.8 mm (1.25") flange
	G1-19	Gasket, 44.5 mm (1.75") flange
	G1-56	Gasket, 31.8-38.1 mm (1.25-1.50") flange

NSS = Not Serviced Separately.



STANDARD & OPTIONAL EQUIPMENT

MIXERS, LP GAS (STANDARD)

PART #	DESCRIPTION
CA100M-1	38.1 mm (1.50") Air Horn
CA100M-2	47.6 mm (1.88") Air Horn
CA100M-2-2	47.6 mm (1.88") Air Horn Silicone
CA100M-3	52.4 mm (2.06") Air Horn
CA100M-3-2	52.4 mm (2.06") Air Horn Silicone
CA100M-3-9	Mixer Assembly
CA100M-4	58.7 mm (2.31") Air Horn
CA100M-4-2	58.7 mm (2.31") Air Horn Silicone
CA100M-4-9	58.7 mm (2.31") Air Horn Special
CA100M-5	41.3 mm (1.63") Air Horn
FB100M-4	58.7 mm (2.31") Air Horn for feedback
CA100M-636	Mixer Ass'y Clark (2802636)
CA100M-647	Mixer Assembly

THROTTLE BODIES (STANDARD)

PART #	DESCRIPTION
AT2-1	3/4" SAE flange, 6.4 mm (0.25") shaft dia.
AT2-1-5	3/4" SAE flange, 6.4 mm (0.25") shaft dia., w/ vacuum advance
AT2-2	1" SAE flange, 6.4 mm (0.25") shaft dia.
AT2-2-5	1" SAE flange, 6.4 mm (0.25") shaft dia., w/ vacuum advance
AT2-3	1-1/4" SAE flange, 8.0 mm (0.31") dia.
AT2-3-8	1-1/4" SAE flange, 8.0 mm (0.31") dia., w/ vacuum advance
AT2-4-1	1-1/2" SAE flange, 8.0 mm (0.31") shaft dia.
AT2-4-3	1-3/4" SAE flange, 8.0 mm (0.31") shaft dia.
AT2-4-4	1-1/2" SAE flange, 8.0 mm (0.31") shaft dia. w/ needle bearings
AT2-16-1	1-1/4" to 1-1/2" SAE flange, 8.0 mm (0.31") shaft dia., no vacuum advance
AT2-16-2	1-1/4" to 1-1/4" SAE flange, 8.0 mm w/S5
AT2-16-3	1-1/4" to 1-1/2" SAE flange, 8.0 mm (0.31") shaft dia., w/ needle bearings & internal seal
AT2-16-4	1-1/4" to 1-1/2" SAE flange, 8.0 mm (0.31") shaft dia., w/ needle bearings
AT2-16-5	Throttle Body Ass'y, Center Bore
AT2-23	1-1/4" SAE flange, 8.0 mm (0.31") shaft dia.
AT2-23-4	1-1/4" SAE flange, 8.0 mm (0.31") shaft dia., w/ needle bearing & internal seal
AT2-23-8	1-1/4" SAE flange, 8.0 mm (0.31") shaft dia., w/ vacuum advance
BT2-16-183	Throttle Body, sub-assembly

The above throttle bodies are offset.

AIR GAS VALVES

PART #	DESCRIPTION
AV1-14	Standard, w/ Hydrin diaphragm, LPG
AV1-14-12	Air Valve Ass'y
AV1-14-12-2	Air Valve ass'y, Silicone
AV1-14-2	Lean, w/ Hydrin diaphragm, LPG
AV1-14-3	Standard, w/ silicone diaphragm, LPG
AV1-14-4	Lean, w/ silicone diaphragm, LPG
AV1-14-220-2	W/ silicone diaphragm, for non-feedback
AV1-1447	For standard feedback, w/ Hydrin diaphragm
AV1-1447-2	For standard feedback, w/ silicone diaphragm
AV1-14-2-838	Air Gas Valve, 30/35 Clark
AV1-1447-278	Air Valve Flow 60 to 64 Kohler
AV1-14-76-2	Air Valve With Silicone 61/68
AV1-14-9-2	Air Valve Ass'y, w/2 Check Valve
CV1-14	Air Gas Valve Ass'y, CA100
CV1-14-2	Special lean, w/ silicone diaphragm
EV1-14-2	w/ 42 valve & silicone diaphragm
AV1-25413	Valve Assembly, Gas Air

THROTTLE BODIES (CONTINUED)

PART #	DESCRIPTION
AT2-23-5	Throttle Body 1 - 1/4 w/S5-11
AT2-23-6	Throttle Body 1 - 1/4 w/T1-17
AT2-23-6	T/B w/T2-23 Tapped (LP Gas)

CLAMP

PART #	DESCRIPTION
AC2-29	Clamp Ass'y, CA125-76

GOVERNOR

PART #	DESCRIPTION
AT2-46G	Governor Ass'y.
AT2-60-G-1	Governor Ass'y, Hyster 2V
AD1-85	Diaphragm Ass'y, Throttle, governor



**SECTION 1: CARBURETORS & MIXERS
CA 100 SERIES**

STANDARD & OPTIONAL EQUIPMENT

RING SPACER

PART #	DESCRIPTION
R1-29	Ring, air valve spacer, AV1-14 (to lean idle mixtures)

THROTTLE SHAFTS

PART #	DESCRIPTION
S5-1	6.4 mm (0.25") dia., 114 mm (4.50") long (stud. on AT2-1, AT2-2)
S5-2	8.0 mm (0.31") dia., 127 mm (5.00") long (std. on AT2-3, AT2-4-1, AT2-4-3, AT2-16-1, AT2-23)
S5-6	6.4 mm (0.25") dia., 121 mm (4.75") long
S5-7	8.0 mm (0.31") dia., 133 mm (5.25") long
S5-11	8.0 mm (0.31") dia., 156 mm (6.13") long

ADAPTERS

PART #	DESCRIPTION
AA3-18	100M to throttle body, offset 31.8 mm (1.25")
AA3-29-1	100M to 2-1/16" hose
AA3-29-2	100M to 2-1/16" hose, tapped 12-24
A3-31	100M to 2-1/4" hose
AA3-32-1	100M to IMPCO 2B throttle body
AA3-43	100M to Toyota lift truck throttle body
AA3-49	100M to Datsun C5-P5 Nikki throttle body
AA3-50	100M to Datsun C3-P3 throttle body
AA3-58	100M to throttle body, offset 11.1 mm (0.44")
A3-60	100M to Toyota Model 30A & 30B throttle body
A3-94	Datsun 4-bolt to 1" SAE flange
A3-29-1	Adapter CA100M /CA125 to 2 -1/16
A3-29-2	Adapter CA100M /CA125 to 2 -1/16
A3-29-3	Adapter CA100M /CA125 to 2 -1/16
A3-29-3	Adapter CA100M /CA125 to 2 -1/16

SPACERS (OPTIONAL)

PART #	DESCRIPTION
AS3-10	Ass'y, 12.7 mm (0.50") to turn Air Horn 90 degrees
AS3-43	Ass'y, 4.8 mm (0.19") to turn Air Horn 90 degrees

LEVERS

PART #	DESCRIPTION
AL1-7-1	Ass'y 44.5 mm (1.75") long (std. on AT2-3, AT2-4-1, AT2-4-3, AT2-16-1)
AL1-7-2	Ass'y w/ 6.4 mm (0.25") ball stud, 44.5 mm (1.75") long
AL1-7-3	Ass'y, 33.3 mm (1.31") long (std. on AT2-1, AT-2, AT2-23)
AL1-7-4	Ass'y, w/ swivel, 44.5 mm (1.75") long
AL1-7-5	Ass'y, w/ Wisconsin swivel, 6.4 mm (0.25") mounting I.D., 20.6 mm (0.81") long
AL1-8-2	Stop ass'y, 8.0 mm (0.31") mounting I.D., 19.1 mm (0.75") long
AL1-8-3	Stop ass'y, 8.0 mm (0.31") mounting I.D., cutdown, 9.5 mm (0.38") long
AL1-8-4	Stop ass'y, 6.4 mm (0.25") mounting I.D., cutdown, 9.5 mm (0.38") long
AL1-25-1	Ass'y, spring loaded, floating, 6.4 mm (0.25") mounting I.D., 34.9 mm (1.38") long w/ AC2-14-1
AL1-25-2	Ass'y, spring loaded, floating, 8.0 mm (0.31") mounting I.D., 34.9 mm (1.38") long w/ AC2-14-2
AL1-26-1	Ass'y, floating 6.4 mm (0.25") mounting I.D., 54.0 mm (2.13") long, w/ AC2-11
AL1-26-2	Ass'y, floating, w/ swivel 6.4 mm (0.25") mounting I.D., 54.0 mm (2.13") long, w/ AC2-11
AL1-27-1	Ass'y, floating 8.0 mm (0.31") mounting I.D., 54.0 mm (2.13") long, w/ AC2-12
AL1-27-2	Ass'y, floating w/ swivel, 8.0 mm (0.31") mounting I.D., 54.0 mm (2.13") long, w/ AC2-12
AL1-31	Ass'y shaft clamp, 6.4 mm (0.25") mounting I.D., 49.2 mm (1.94") long
AL1-33	Ass'y shaft clamp, 8.0 mm (0.31") mounting I.D., 49.2 mm (1.94") long
AL1-46	Ass'y steel shaft clamp, 8.0 mm (0.31") mounting I.D., 47.6 mm (1.88") long

RETURN SPRINGS (OPTIONAL)

PART #	DESCRIPTION
AS2-50-1	Throttle return, 6.4 mm (0.25") shaft
AS2-50-2	Throttle return, 8.0 mm (0.31") shaft

BRACKET ASSEMBLIES (OPTIONAL)

PART #	DESCRIPTION
AB4-2	Boden wire
AB4-19	AS2-50-2 throttle return spring

CARBURETOR DESCRIPTION**CA100 SERIES**

ITEM #	DESCRIPTION
CA100-8	1-1/4" SAE flange, 2-1/16" Air Horn
CA100-10	1-1/4" SAE flange, 2-5/16" Air Horn, lean flow
CA100-12	1-1/2" SAE flange, 2-5/16" Air Horn
CA100-102	Carburetor, Ford, Yale
CA100-104	Carburetor, 1-1/4" SAE flange, 2-1/16" Air Horn
CA100-108	1-1/4" SAE flange (short), 2-1/16" Air Horn, lean flow, low profile
CA100-110	1" SAE flange, 2-1/16" Air Horn, drilled shaft, AL1-26-401
CA100-112	1-1/4" SAE flange, 2-1/16" Air Horn, lean flow, short shaft
CA100-124-2	Carb. 1" x 2-1/16" Air Horn AT2-2
CA100-134	1" SAE flange, 2-1/16" Air Horn, lean flow
CA100-136	1-1/4" SAE flange, 2-1/16" Air Horn
CA100-138	1" SAE flange, 1-1/16" Air Horn, Yale
CA100-139	1" SAE flange, 2-1/16" Air Horn w/ bracket & swivel
CA100-46	1-3/4" SAE flange, 2-5/16" Air Horn
CA100-498	Carb. Ass'y NAACO (1389498)
CA100-56	1-1/4" SAE flange, 2-1/16" Air Horn, Kalmar A-C
CA100-6	Carb. 1" x 1 7/8"
CA100-60	1" SAE flange, 1-5/8" Air Horn, lean flow
CA100-62	1" SAE flange, 1-7/8" Air Horn, lean flow
CA100-621	Carb. 2-5/16 Air Horn, Mazda 2.2L, Yale
CA100-64	1-1/4" SAE flange (short), 2-1/16" Air Horn
CA100-64G	2-1/6" Air Horn, 70/75 flow, no throttle ass'y.
CA100-66	1-1/2" SAE flange, 2-5/16" Air Horn, 72/80 flow
CA100-78	1-1/4" SAE flange, 2-5/16" Air Horn, 72/80 flow, low profile
CA100-90	1-1/4" SAE flange, 2-5/16" Air Horn, lean flow, long shaft
CA100-70	Carburetor
CA100-7108	Carburetor Ass'y (2817108)
CA100-91A	Carburetor Ass'y
CA100-180	1-1/4" SAE flange, 2-1/16" Air Horn w/ L1-33, Clark
CA100-183	Carburetor Ass'y
CA100-194	AA3-67 adapter, 2-1/16" Air Horn, Clark
CA100-222	2-1/6" Air Horn, A3-67 adapter, Mitsubishi
CA100-222-1	Carburetor Ass'y
CA100-224	1-1/4" SAE flange, 2-1/16" Air Horn, AV1-14-220 air gas valve assembly
CA100-245	1-1/4" SAE flange, 2-5/16" Air Horn, long shaft, NB & IS, 72/80 flow
CA100-272	1-1/4" SAE flange, 2-1/16" Air Horn, 100% flow, low caterpillar
CA100-334	Carb. 4.3L LPG, 2-1/16 Air Horn
CA100-35	1-1/2" SAE flange, 2-5/16" Air Horn, AL1-7-1 lever, silicone dia.
FB100M-4	2-5/16" Air Horn, feedback
CA100-010	Carburetor Ass'y, Less 7610010